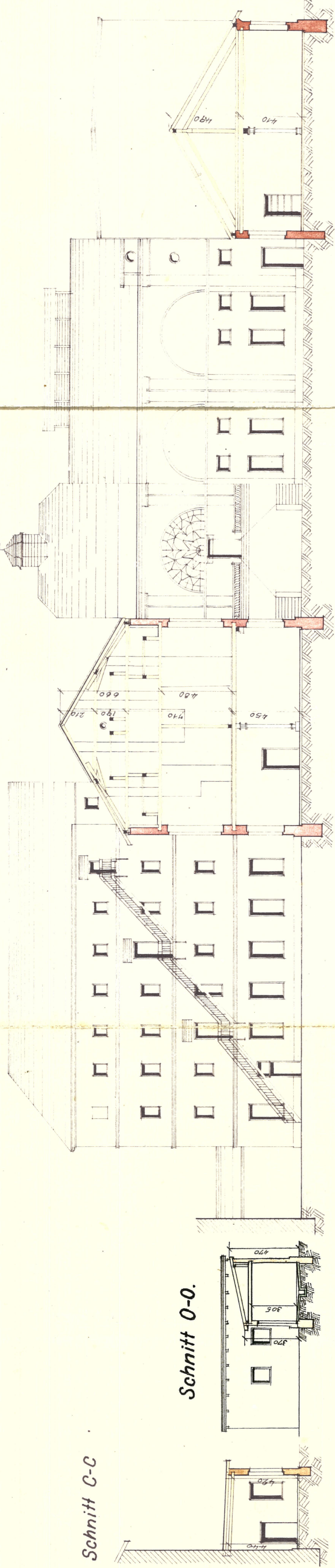


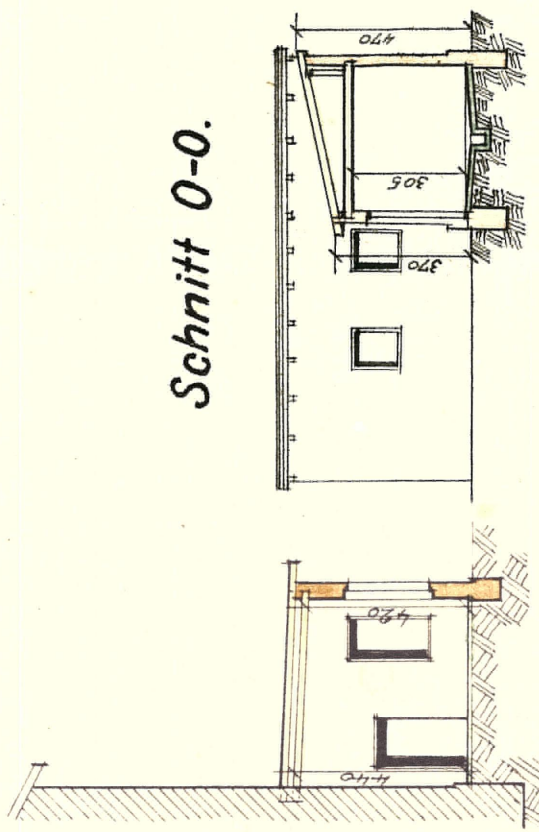
Gebäude der mech. Weberei-, Bleich- und Appreturfabrik der Fa Brüder Neumann in Friedek.

Maßstab 1:200.

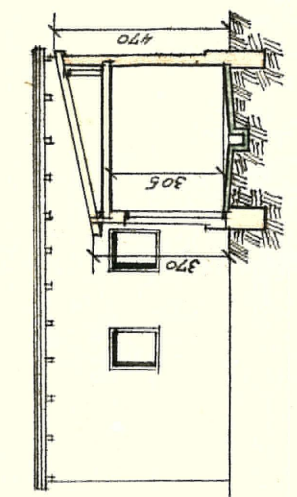
Schnitt B-B



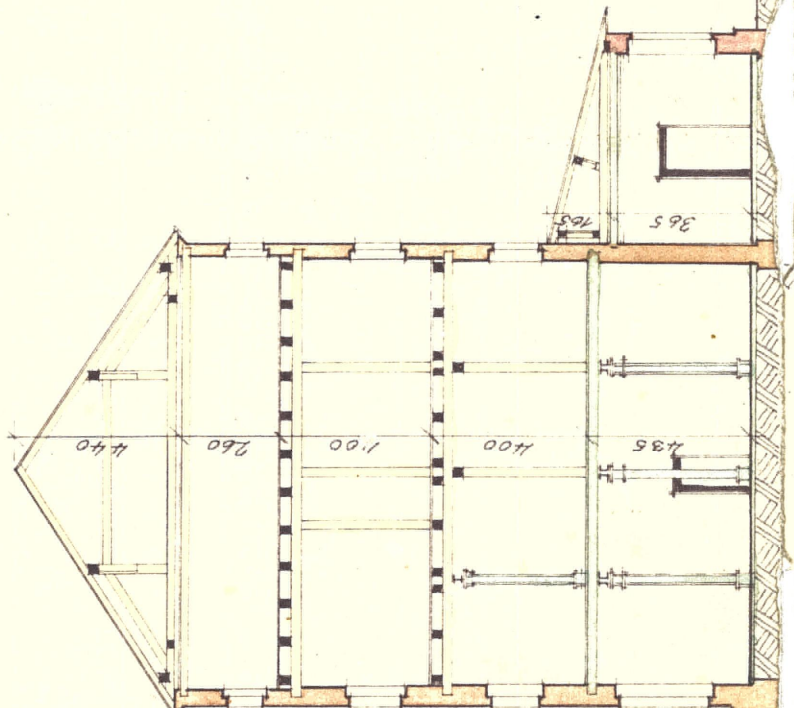
Schnitt C-C



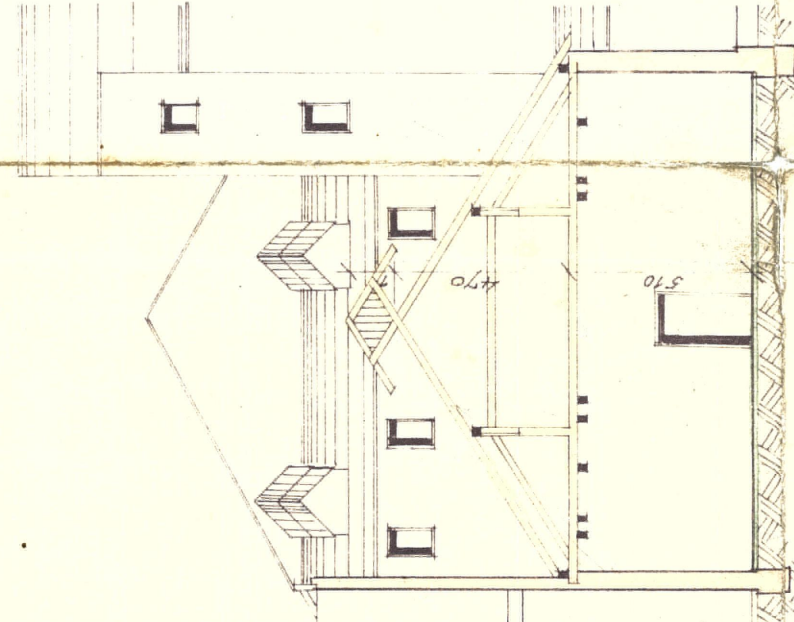
Schnitt O-O.



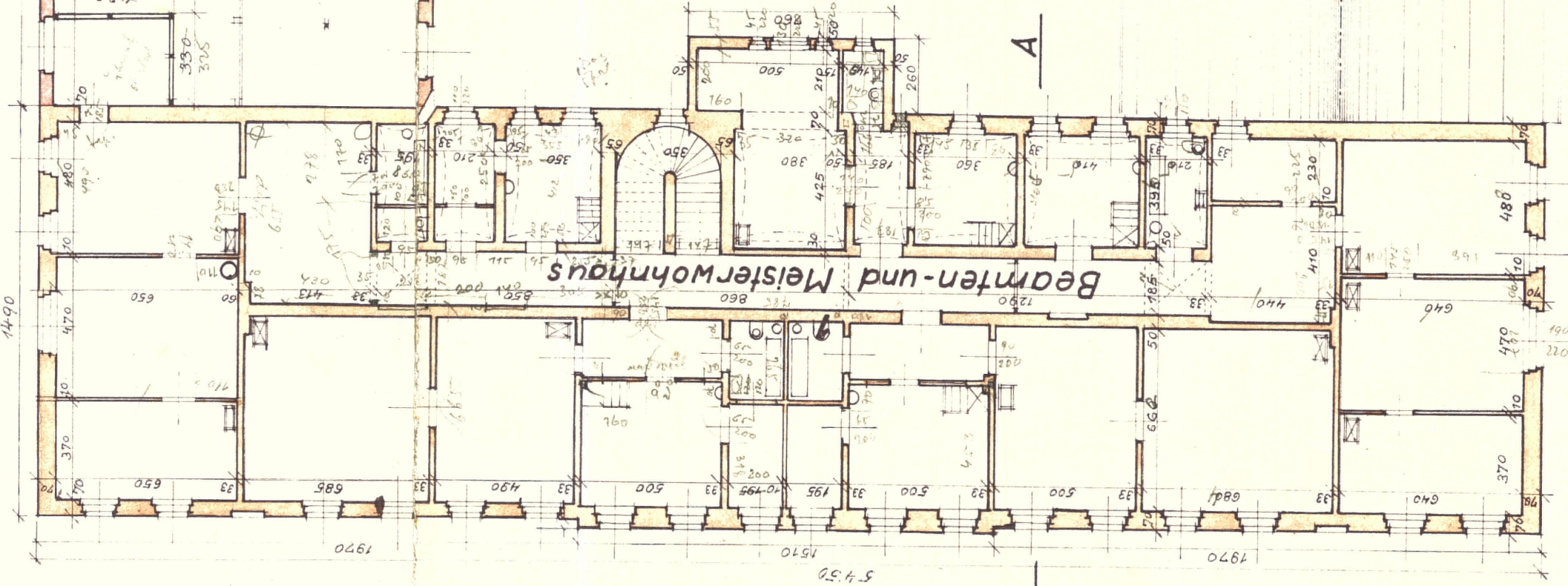
Schnitt I-I



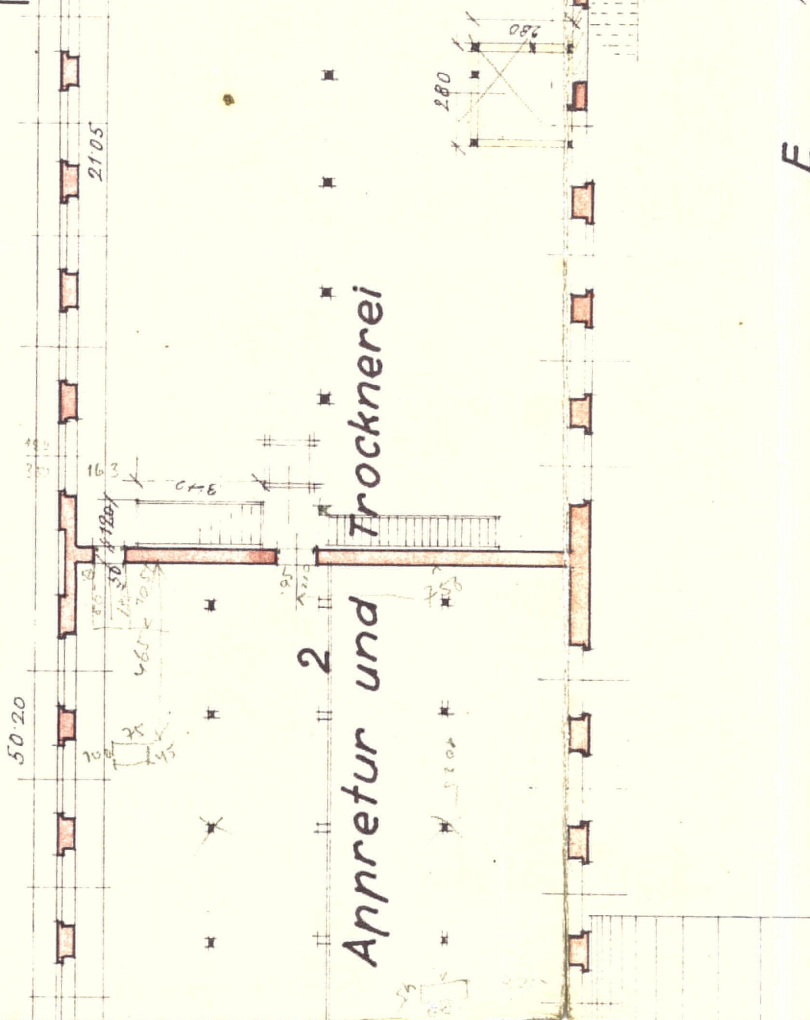
Schnitt H-H



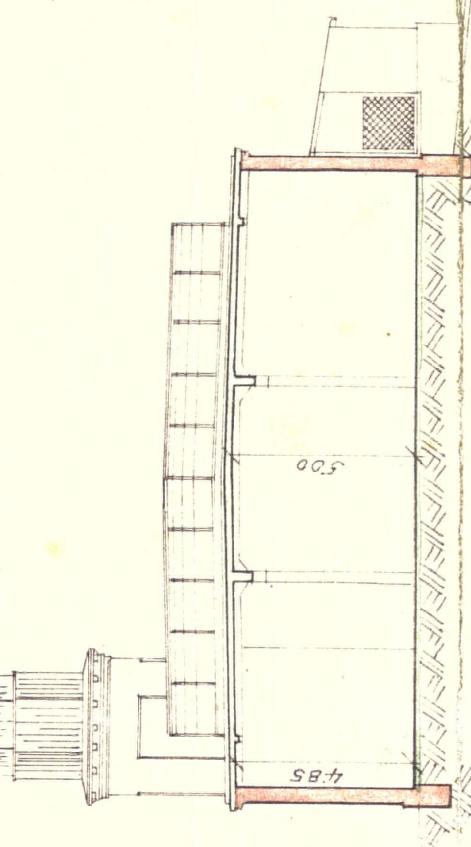
1. Stock-Grundrisse.



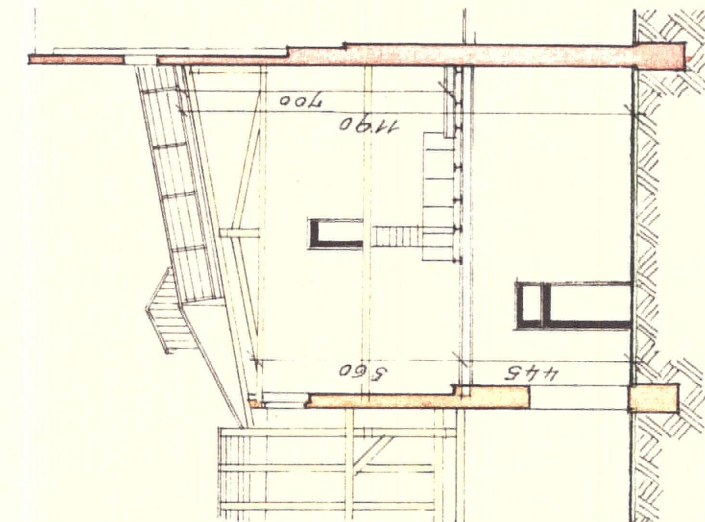
2. Appretur und Trocknerei



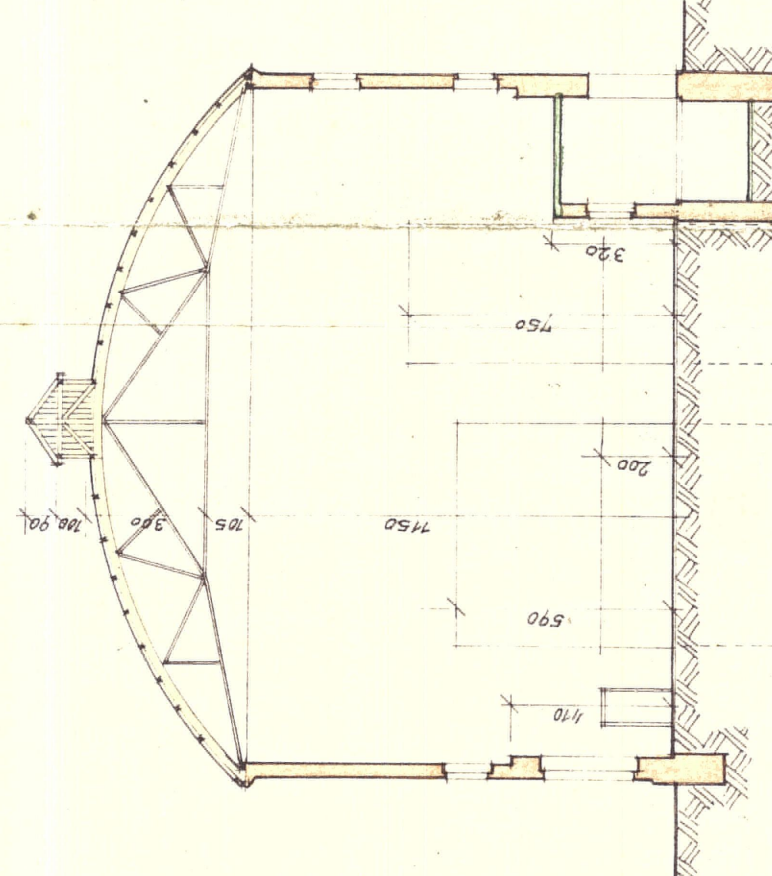
Schnitt K-K



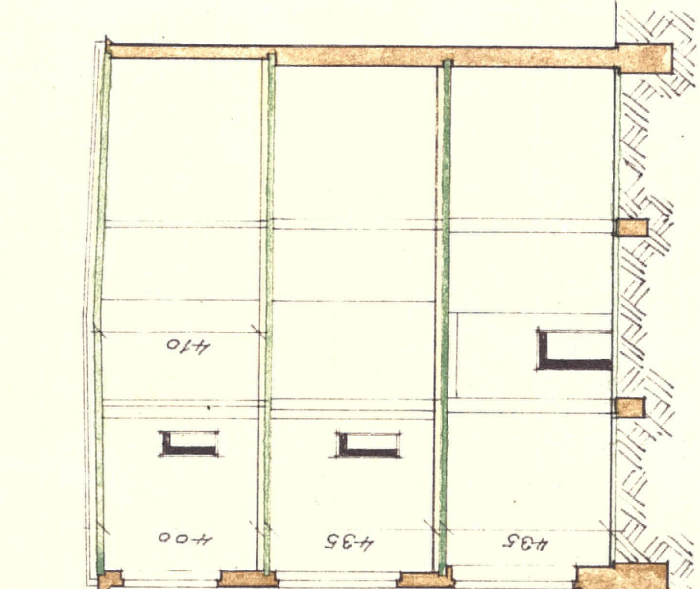
Schnitt G-G.



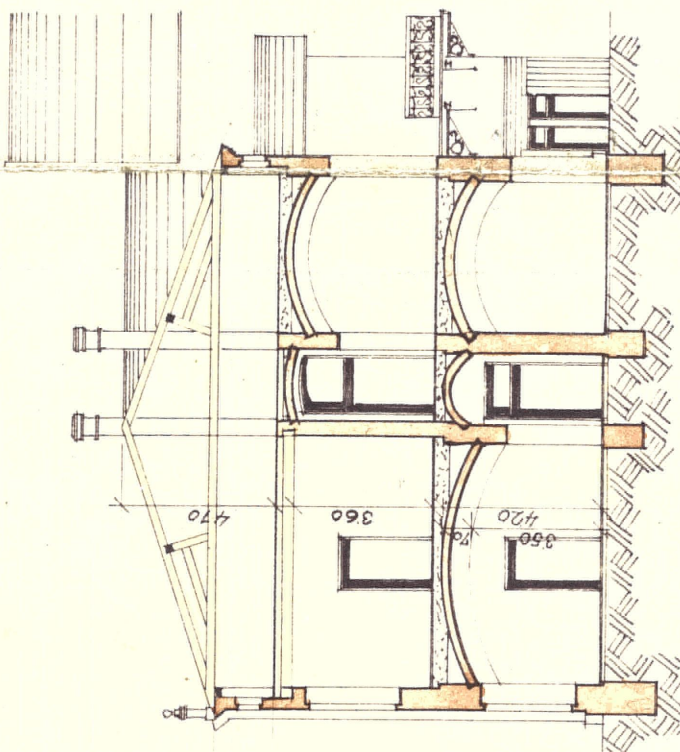
Schnitt F-F



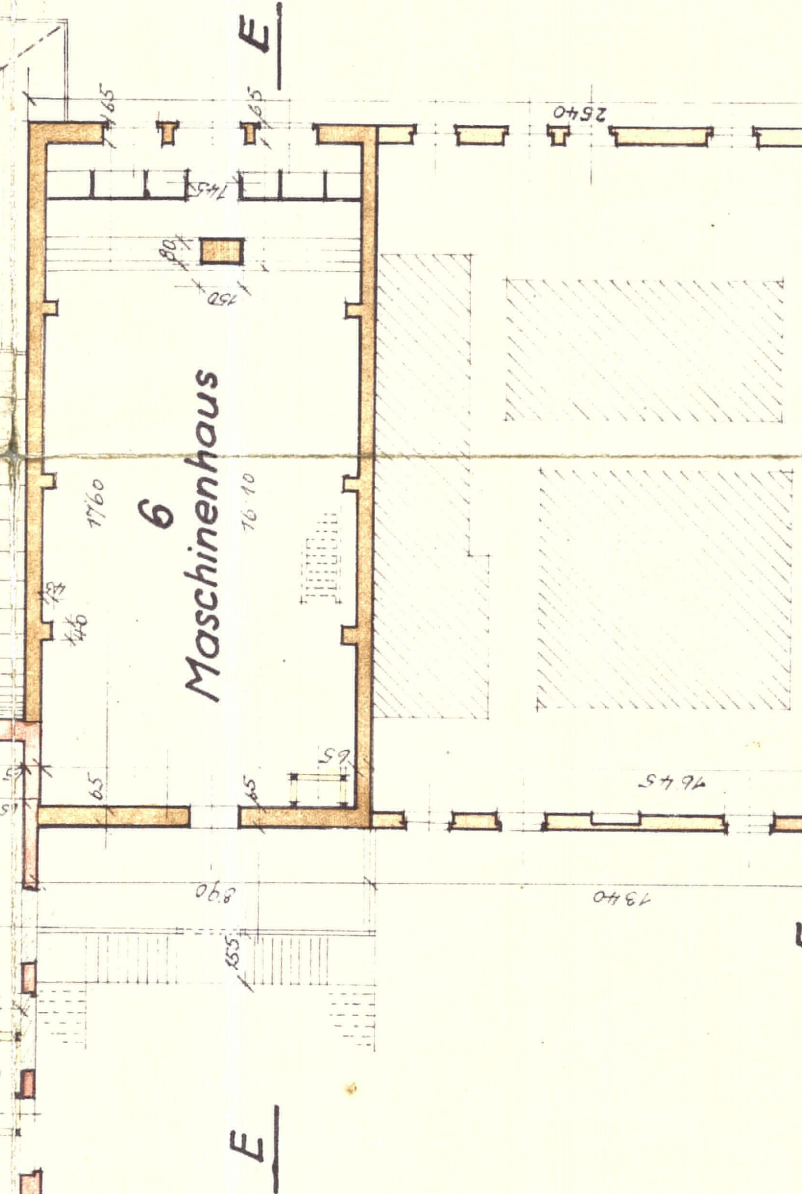
Schnitt D-D.



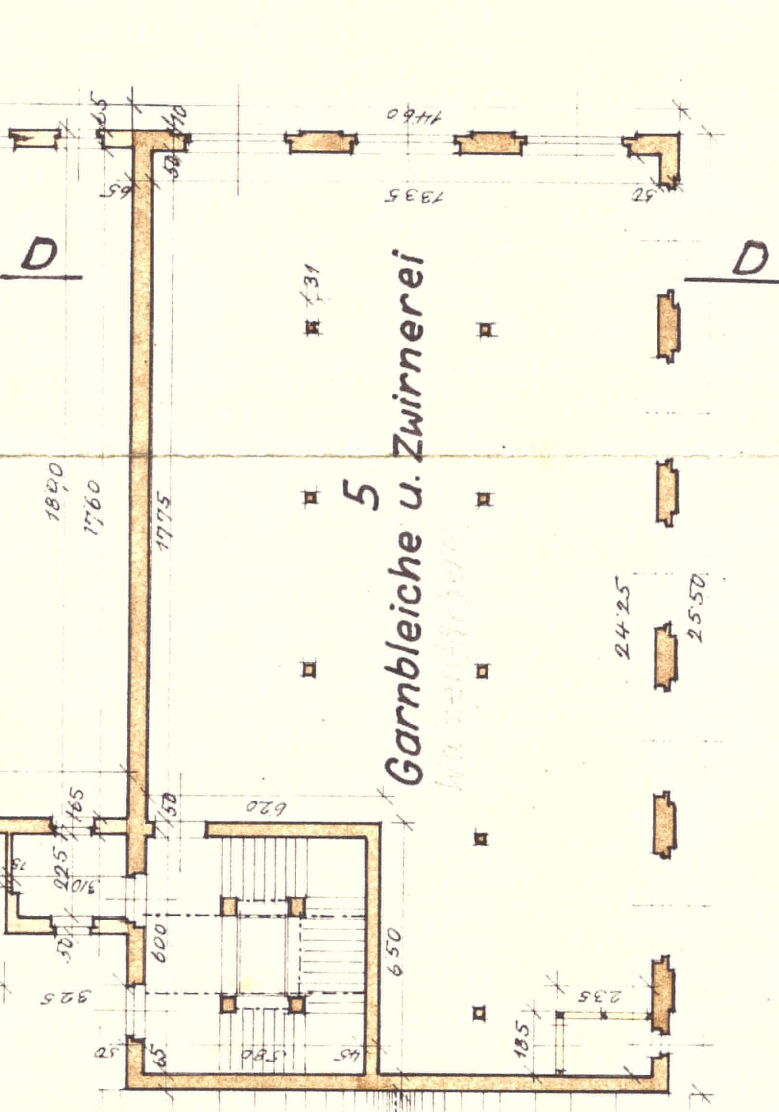
Schnitt A-A



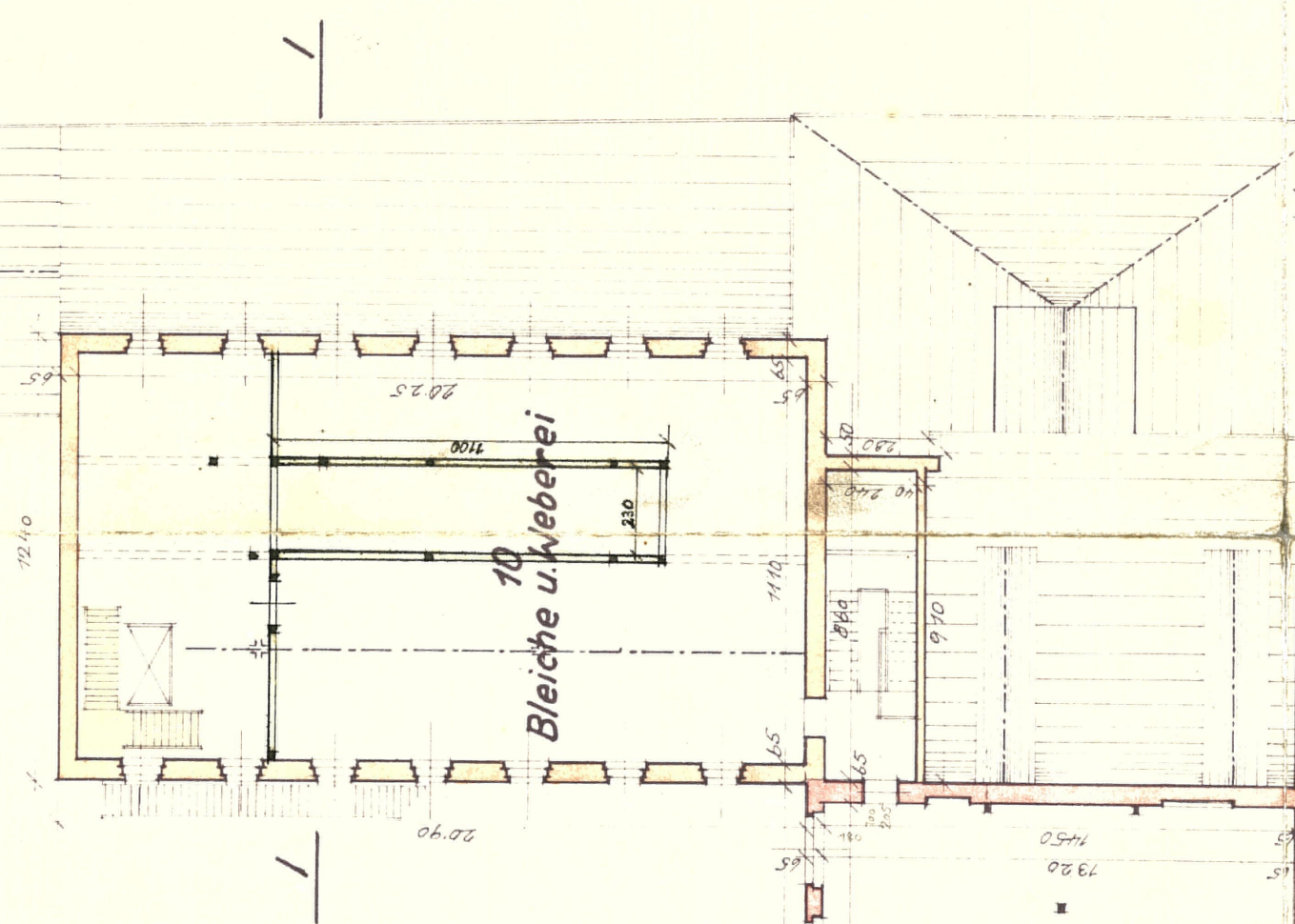
6 Maschinenhaus



5 Garnbleiche u. Zwirnerei



10 Bleiche u. Weberei



BAUMEISTER KADLEC
VLADIMIR
GERICHTLICH BEZUGS GEMEINSCHAFTLICH
BRUNN BEZUGS GEMEINSCHAFTLICH
BRUNN BEZUGS GEMEINSCHAFTLICH

Kadlec